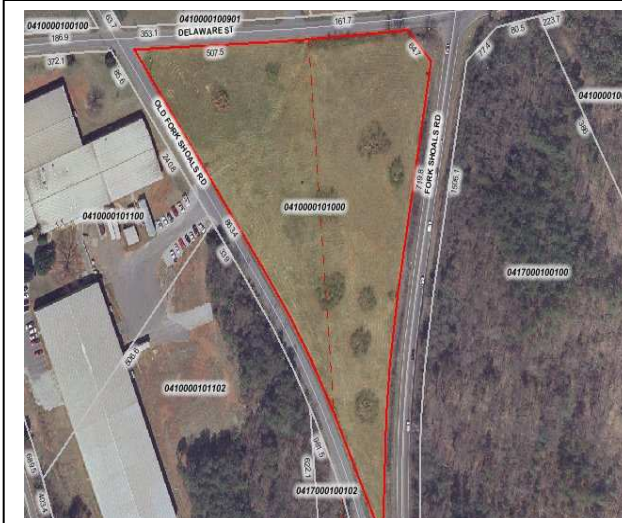


PRICE REDUCED

5 Acres, Fork Shoals Road Greenville, SC



Mixed-Use Site Near Donaldson Center

Reduced to \$375,000

- **Five acres at rear entrance to Donaldson Center, the area's largest industrial development**
- **Growing area, just off of I-185/Southern Connector**
- **High Traffic Count**
- **Owner willing to Build-to-Suit**
- **Growing area with many new residential developments**

CHUCK YEAGER
REAL ESTATE
www.cyrealestate.com

Chuck Yeager - Broker in Charge

223B Siloam Road • Easley, SC 29642

Office: (864) 295-1313

Fax: (864) 295-1316

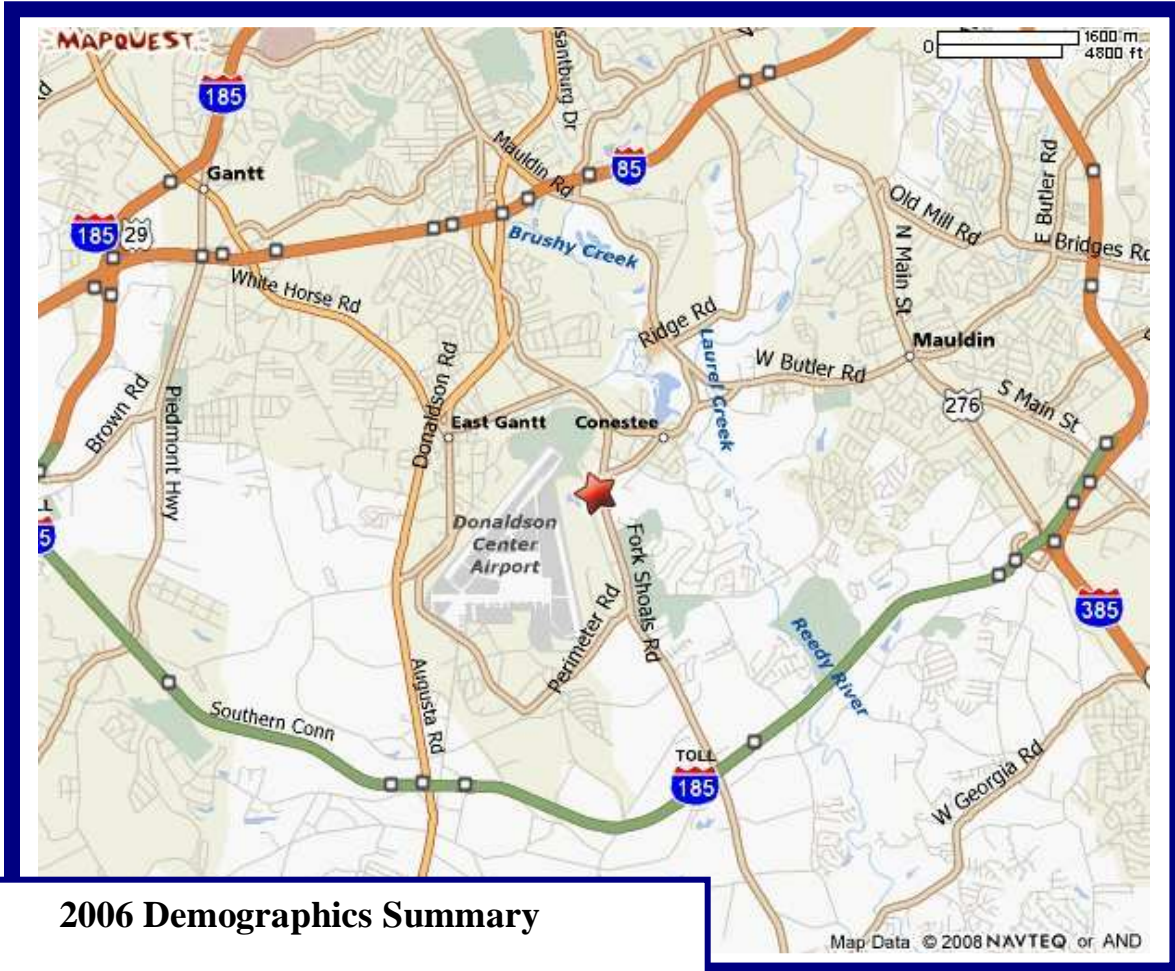
Mobile: (864) 901-4242

chuckyeager@bellsouth.net

Although every effort has been made to ensure accuracy, no liability is assumed for errors or omissions.
Terms, pricing or availability are subject to change without notice.

PRICE REDUCED

5 Acres - Fork Shoals Road, Greenville, SC



2006 Demographics Summary

	<u>1 mi</u>	<u>3 mi</u>	<u>5 mi</u>
Total Population	6,658	35,279	92,493
Median Income	31,707	37,816	34,831

CHUCK YEAGER
REAL ESTATE
www.cyrealestate.com

Chuck Yeager - Broker in Charge

223B Siloam Road • Easley, SC 29642

Office: (864) 295-1313

Fax: (864) 295-1316

Mobile: (864) 901-4242

chuckyeager@bellsouth.net

Although every effort has been made to ensure accuracy, no liability is assumed for errors or omissions.
Terms, pricing or availability are subject to change without notice.